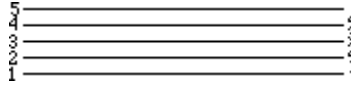


The Musical Staff

Music in our "western" culture is written on five lines and four spaces:

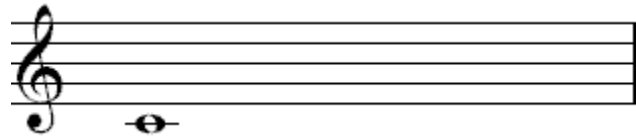


This collection of lines and spaces is called a **staff**. We can refer to each line and each space by its number. On the staff we place notes and rests. The notes on the staff indicate how high or low the pitch will sound. If notes go above or below the staff, ledger lines are used to extend the staff.

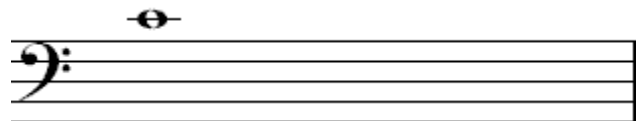
Clefs

A **clef** is a sign written at the beginning of the staff to identify the pitch for each line and space of the staff. There are 3 clef signs: G, F, and C. The clef used for an instrument depends on its range. Here are the three clefs commonly used in orchestra.

G Clef - Treble Clef



F Clef - Bass Clef



C Clef- Alto Clef

