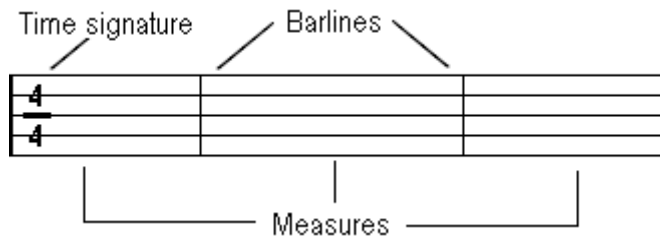
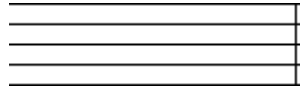


# Bar Lines and Time Signatures

Most music has a regular pulse called beats. Beats are generally grouped into regular patterns of two, three, or four. The patterns are indicated by the time signature. To show these patterns, the music is divided by bar lines into bars or measures.

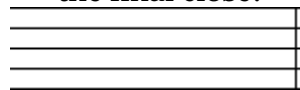


A double bar is placed at the end of a work. It consists of a narrow bar line and a wider bar line:



A double bar with *two narrow bar lines* indicates the end of part of a work or section, but not

the final close:



The meter signature, or time signature, is at the beginning of a piece of music. The top number indicates the number of beats in the pattern, and the bottom number indicates the note value of the beat. These patterns are grouped in bars, called measures, in between bar lines.

## Common Meters

$\frac{4}{4}$  beats in the bar  
quarter note gets one beat



$\frac{2}{4}$  beats in the bar  
quarter note gets one beat



$\frac{3}{4}$  beats in the bar  
quarter note gets one beat



$\frac{6}{8}$  beats in the bar  
eighth note gets one beat

