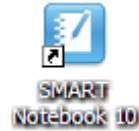


SMART Notebook™

Software Basics

Opening SMART Notebook™ Software

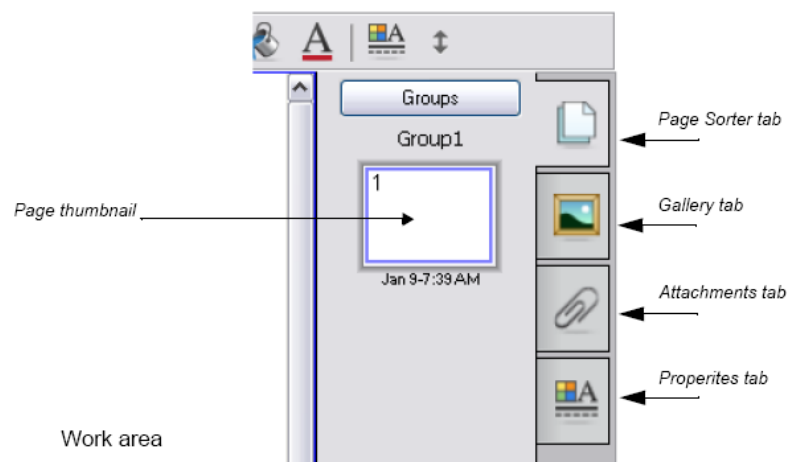


There are a few different ways to open a new/blank SMART Notebook™ file.

- Option 1: If the SMART Notebook™ icon appears on the computer's desktop, double-click to open the software.
- Option 2: Go to the Start Menu. Scan the recent applications to see if SMART Notebook™ appears. Click on the icon once to open the software.
- Option 3: Go to the Start Menu, All Programs, SMART™ Technologies, Notebook™ Software, and Notebook™ Software 10 to open the software.
- Option 4: Go to the Windows Notification Area (bottom right-hand corner of your desktop screen). Find the SMART™ icon, which looks like a blue square with a white circle/donut in the center. Click on this icon once. You will get a menu. Choose the first/top option of Notebook to open the software.

Toggleing Pages within a SMART Notebook™ File

All of your pages are organized in your Page Sorter on the left (or right) side of the screen when you have a SMART Notebook™ file open. This collection of tabs (Page Sorter, Gallery, Attachments, and Properties) can be moved to the opposite side of the screen for convenience while teaching at the board by clicking on the gray double arrow. To move between pages, click once on the small page in the Page Sorter that you'd like to show. You can also move forward or backward by selecting the blue Next Page and Previous Page arrows in the top toolbar.



Using SMART™ Tools

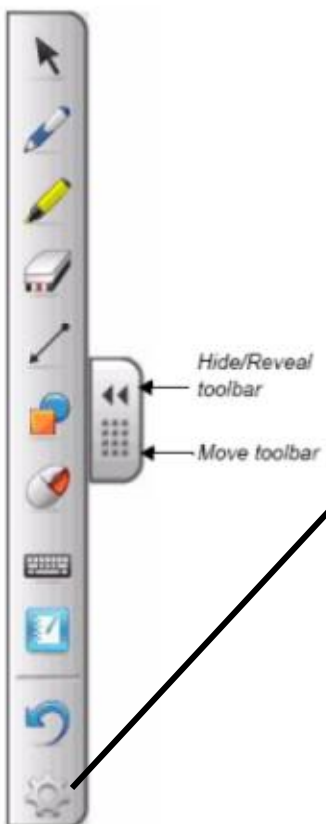


The SMART™ Tools menu can be found by clicking once on the SMART™ icon (white donut on a blue square) in the Windows Notification Area (near the computer's clock). These are the most commonly used options within the SMART™ Tools menu.

- Hide or Show Floating Tools
- Other SMART™ Tools (magnifier, spotlight, screen shade, etc.)
- Check for Updates

Use the SMART™ Quick Reference Guide “Version 10 SMART™ Tools” to learn more about the features here.

Using the Floating Toolbar



The Floating Toolbar allows teachers to use pens, highlighters, shapes, lines, etc. in a variety of programs. This toolbar can be customized by clicking on the gear icon, appearing at the bottom of the bar.

Use the SMART™ Quick Reference Guide “Version 10 Floating Toolbar” to learn more about the features here.

