

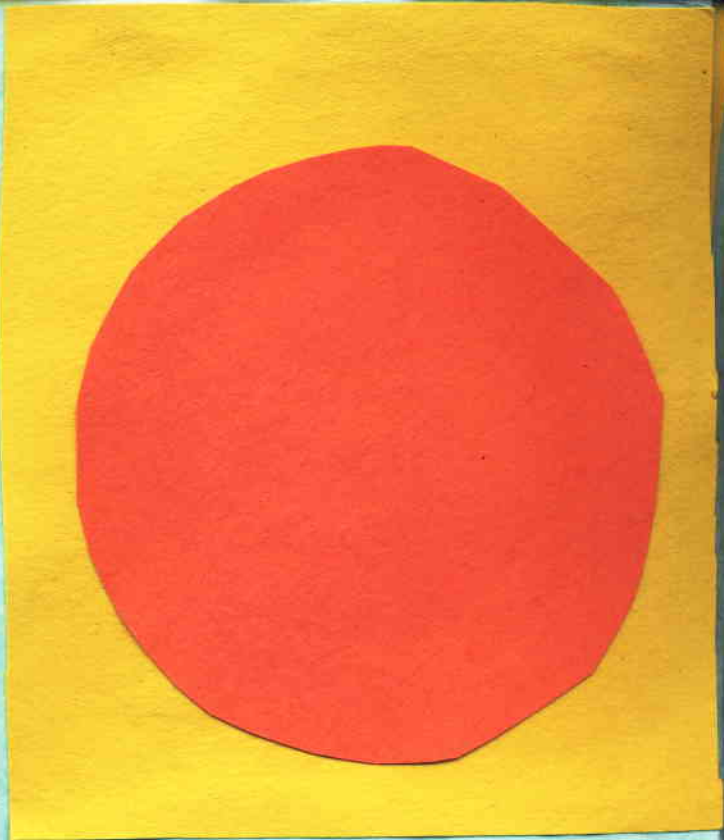
Vaiglelu
Sishila

IS Polly gone??

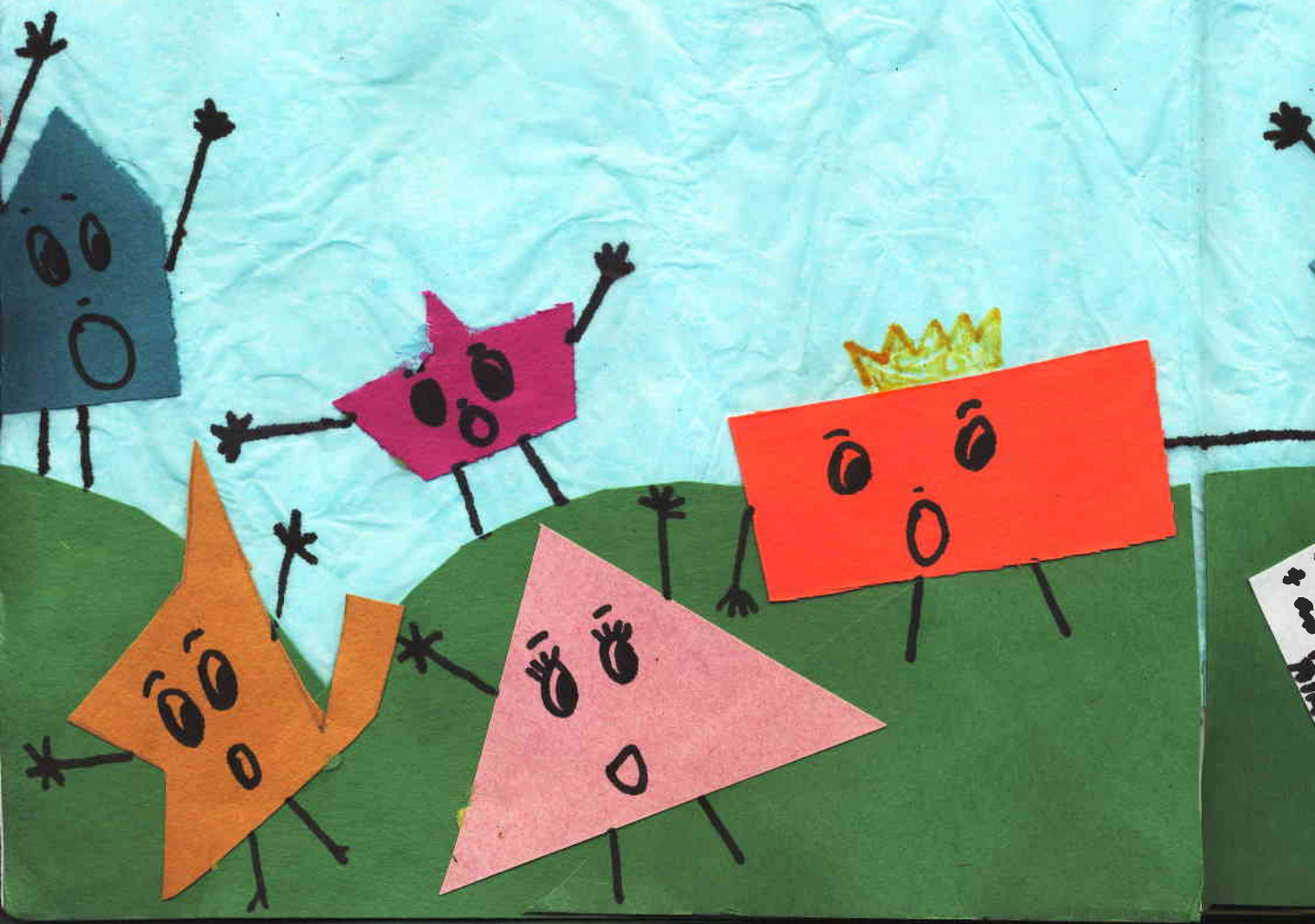


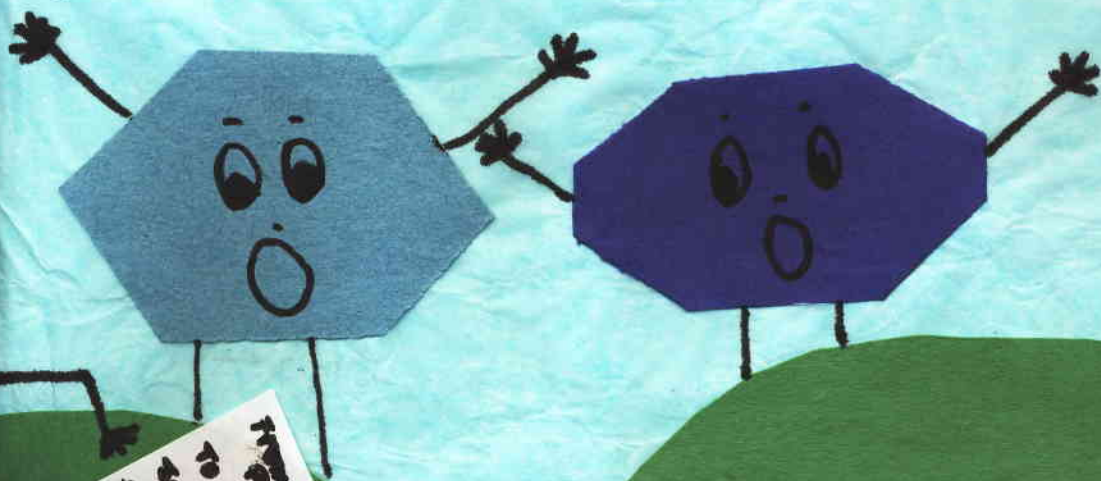
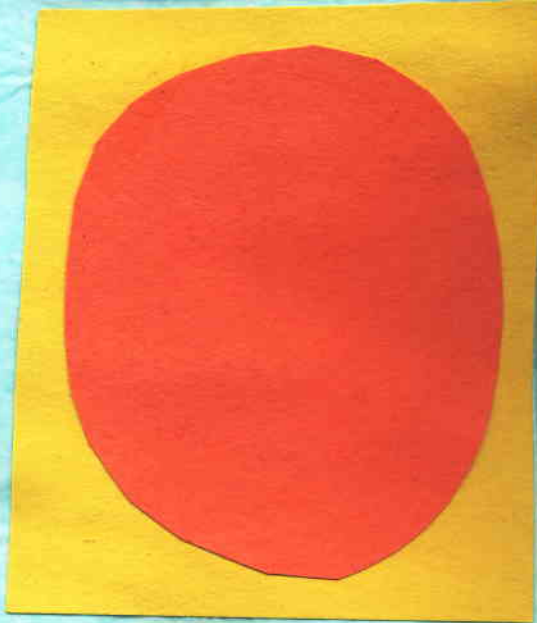
by Sishila
1st hour

A long time ago, there was an ancient jungle in southern India. The forest was lush and green with many friendly animals and shape. Yes, shapes were alive at that time. But one day, the Quad of Lateral, broke the quiet and peace by alarming news. Polly is missing. Until now everyone thought Polly was a myth but now everyone knows that Polly is real and alive and she holds important news.



"We must find her, then only can we restore peace and quiet in this jungle", said the Quad of Lateral. As we walked around the jungle to find Polly, we instead found a letter from Polly. The letter says, "I am Polly and to find me, just follow the yellow brick road".





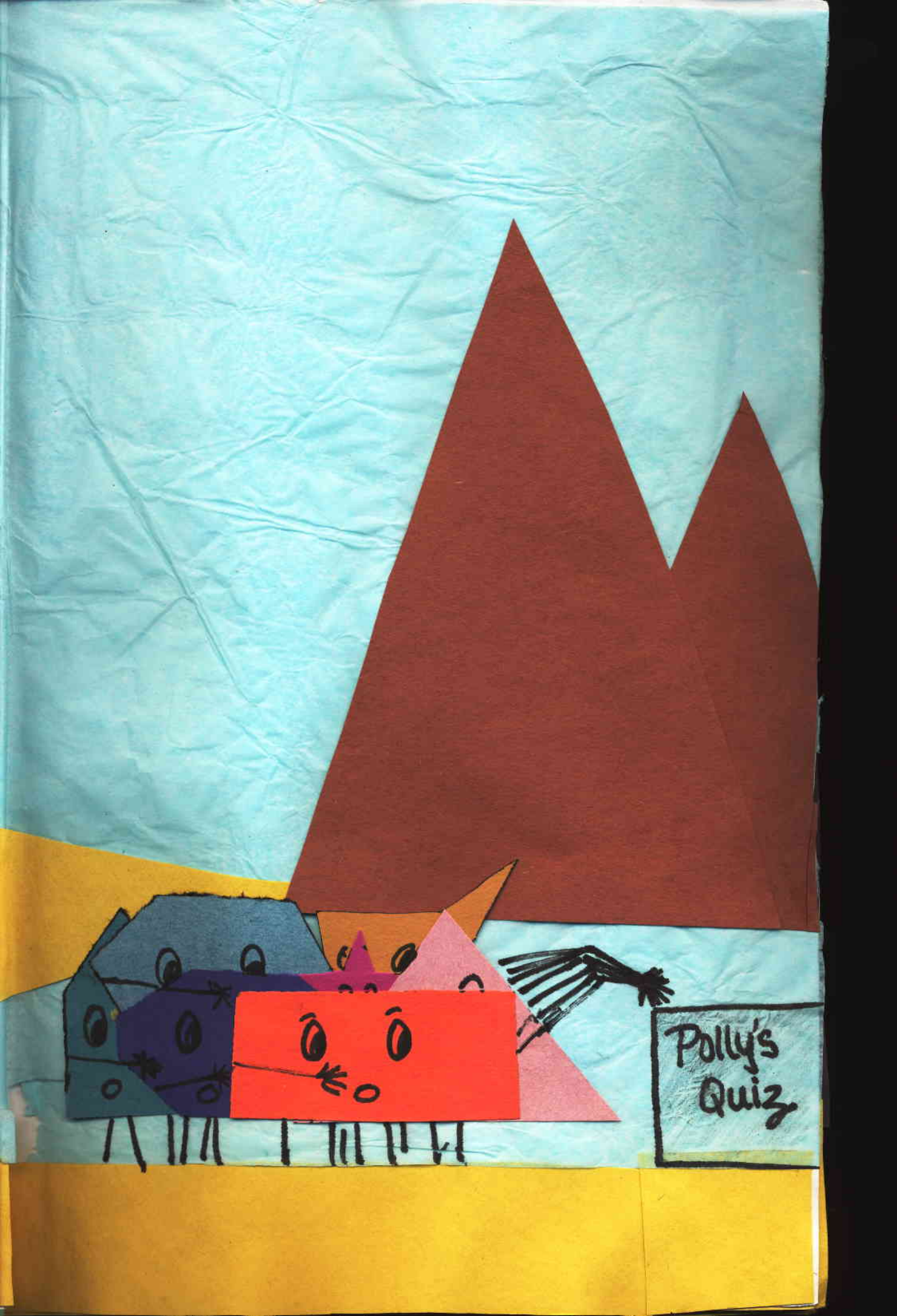
Handwritten text on a white rectangular piece of paper, possibly a note or a list of words, held by the light blue character.

yellow
brick road



As we walked on the yellow brick road, we ran into a huge obstacle. We stared at each other in disbelief. The question said, "one of you has 9 edges and 9 vertices, who are you"? But as we were thinking about this puzzling quiz, a scarecrow and a young girl with ruby shoes walked towards us.

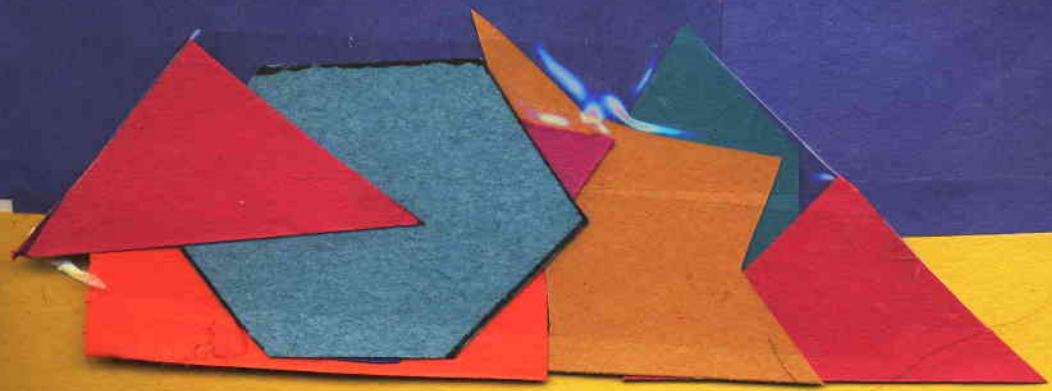
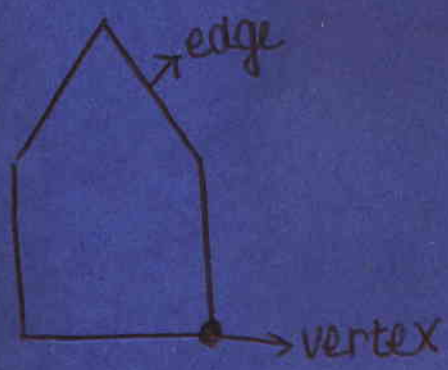


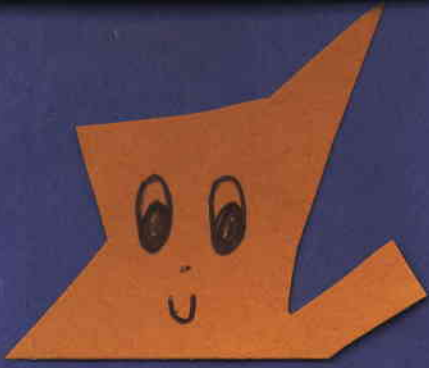


Polly's
Quiz

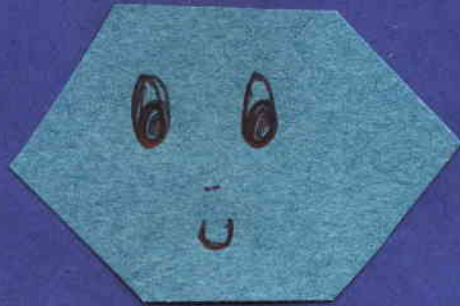
When we presented our problem to her, she smiled and said, "As we learnt in Kansas, an edge is the side of a shape and a vertex or vertices are where two edges or sides meet". So we counted our edges (sides) and vertices (where two sides meet).



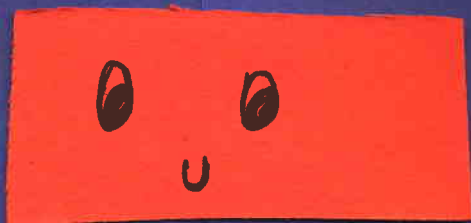
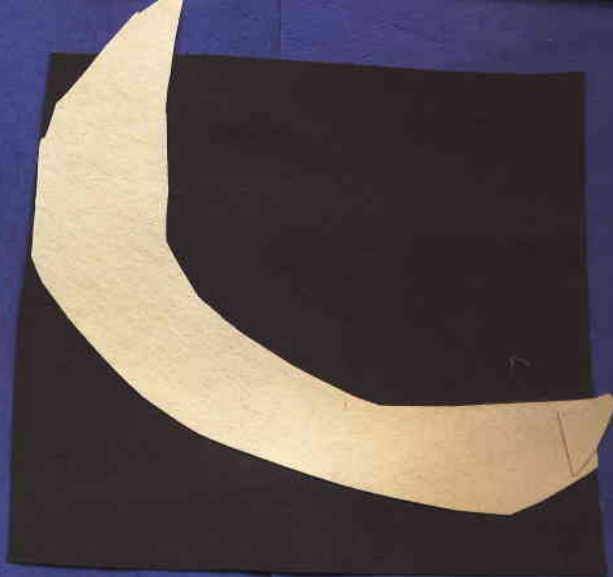




Nonagon is the right answer because a nonagon has 9 edges and 9 vertices; octagon has 8 edges and 8 vertices.



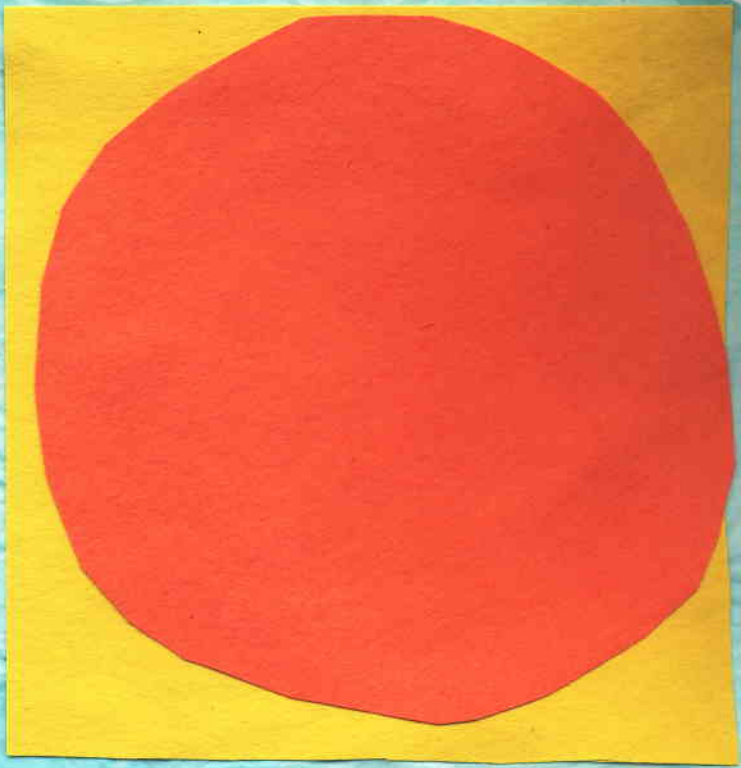
Heptagon has 7 edges and 7 vertices, hexagon has 6 edges and 6 vertices and pentagon has 5 edges and 5 vertices.



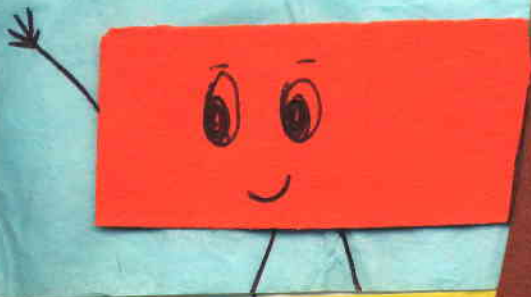
Quad of Lateral has 4 edges and 4 vertices and his wife, the triangle, has 3 edges and 3 vertices.

Finally we thanked Dorothy for her help and told her good bye as she was going towards Emerald City so she can see the wizard of Oz. And we finally made it to Polly's cave.

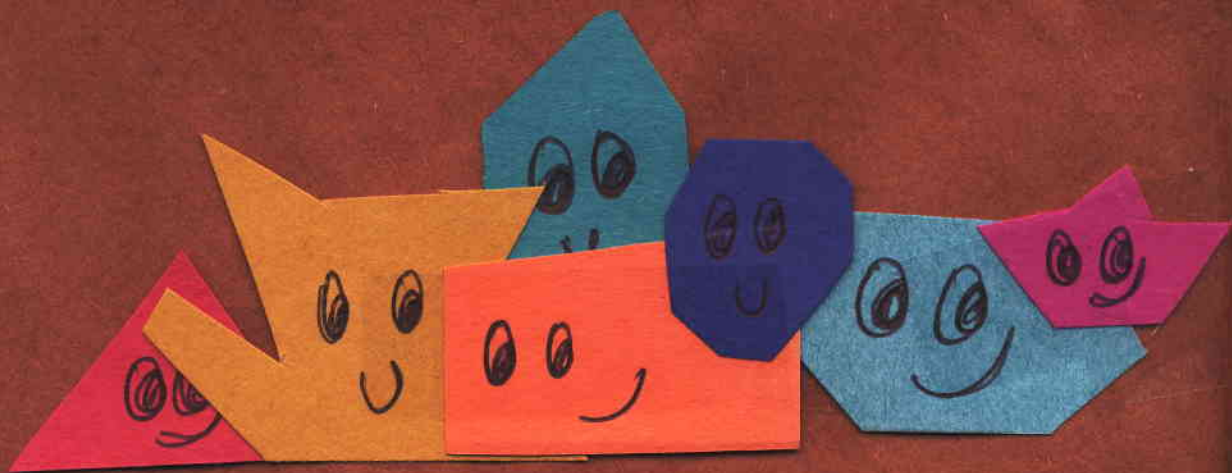


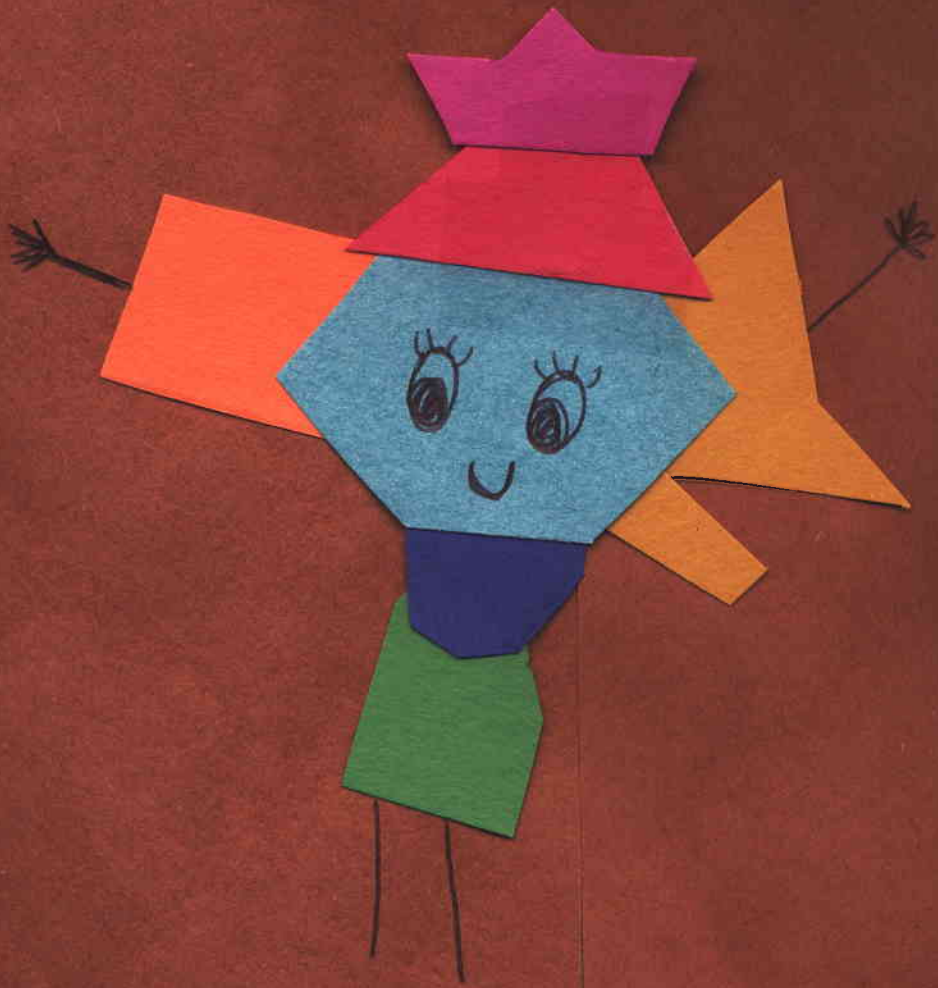


Polly's
cave



When we met Polly, we realized her true beauty. Polly looked like every one of us put together. And she said, "The longed secret of mine is that you are all polygons because polygons are plain figures. And we lived happily ever after knowing that what ever shape (with sides) you are; you are always part of Polly."





Source:-
Math Book
(Geometry)

