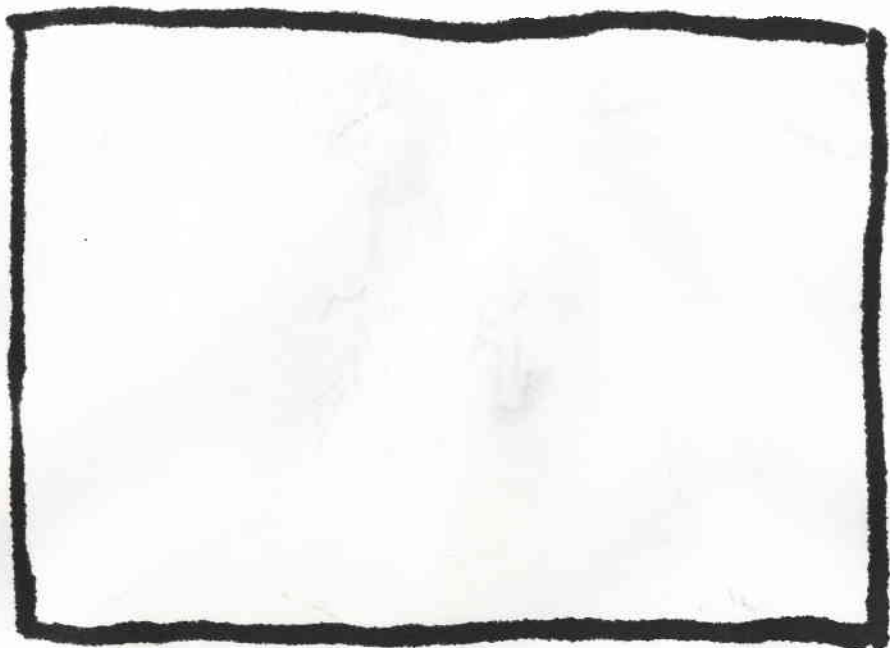
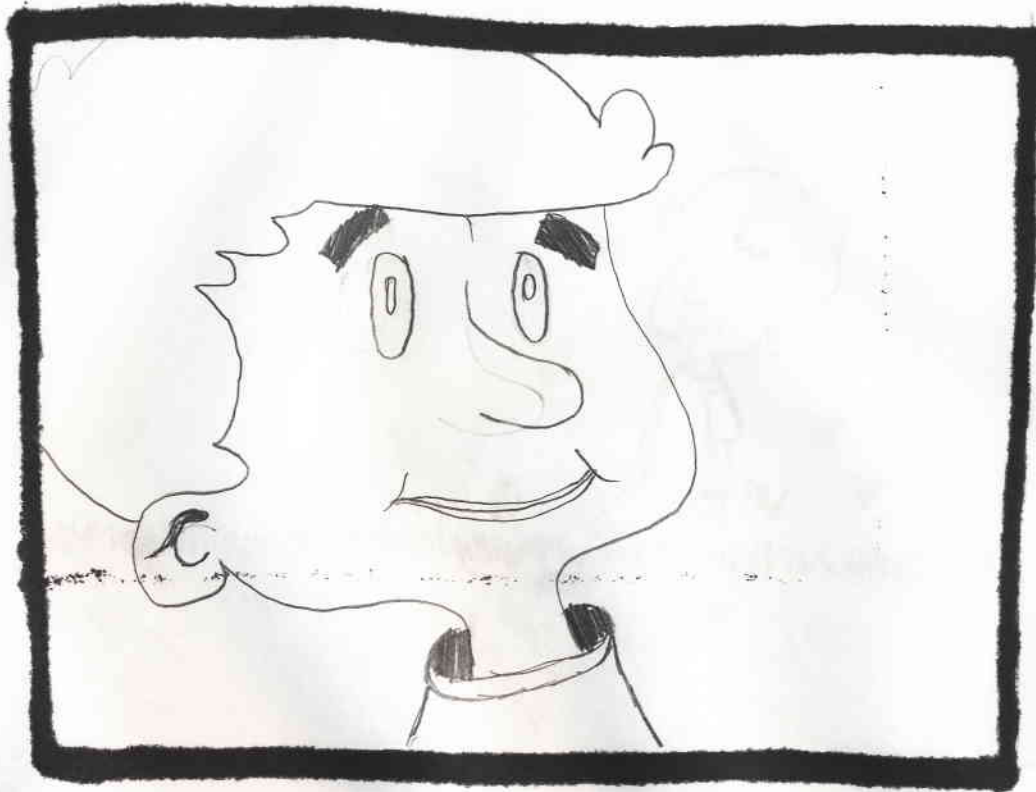


By Kyle Scott

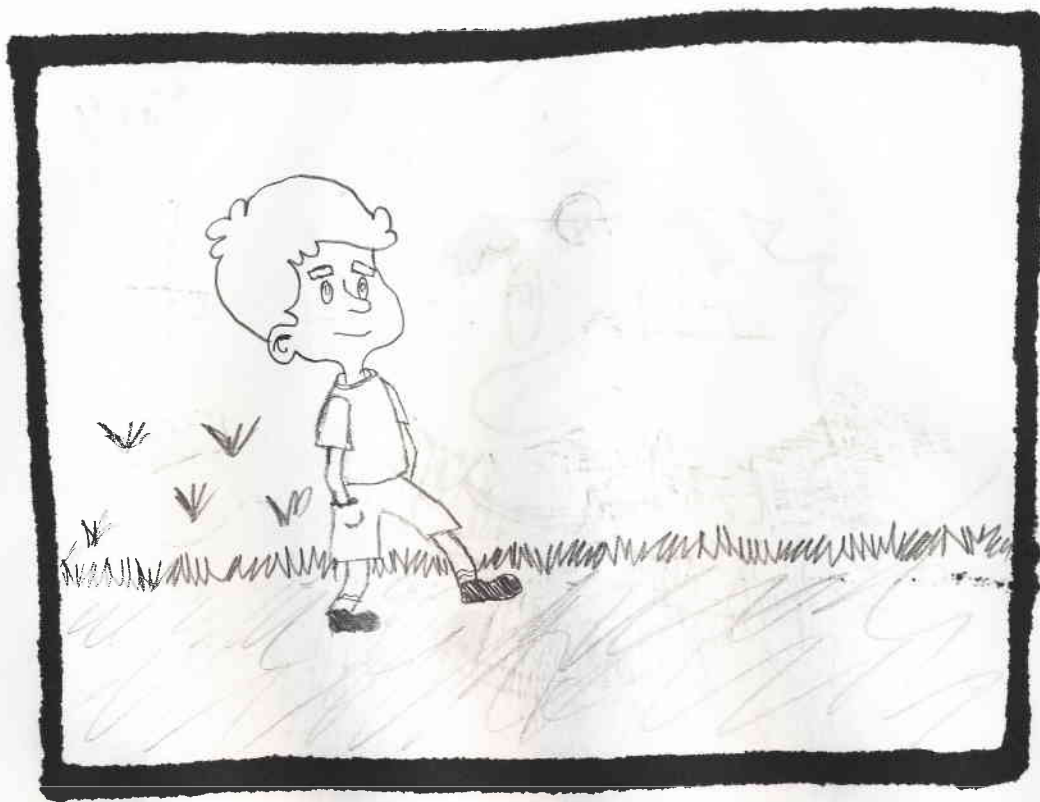
The Story of Segments



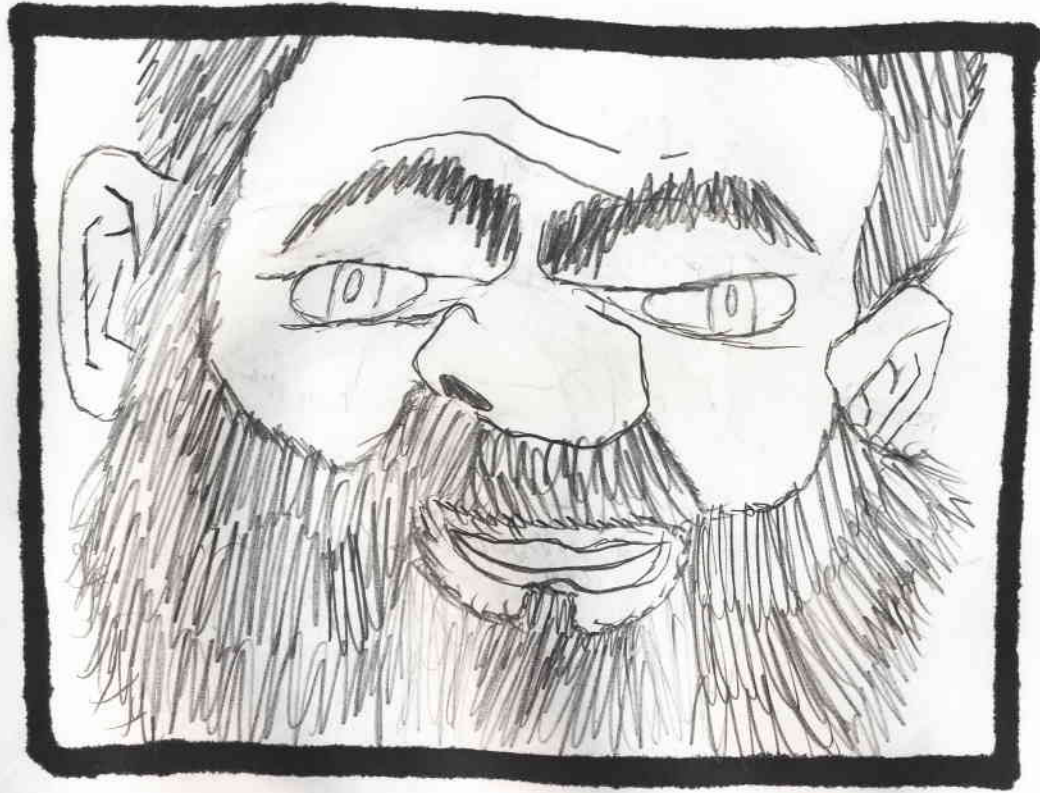
101



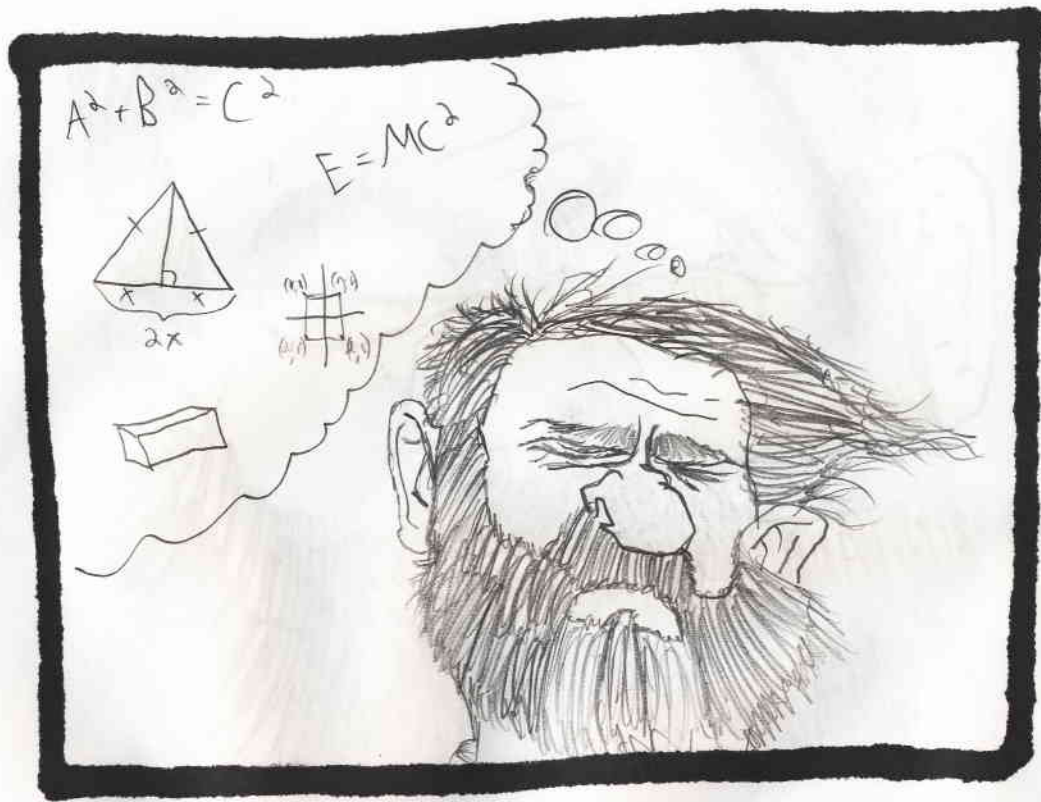
Thousands of years ago, back when the earth was flat,
and when people gave their children very strange names,
there lived a boy named Segh Mihnt.



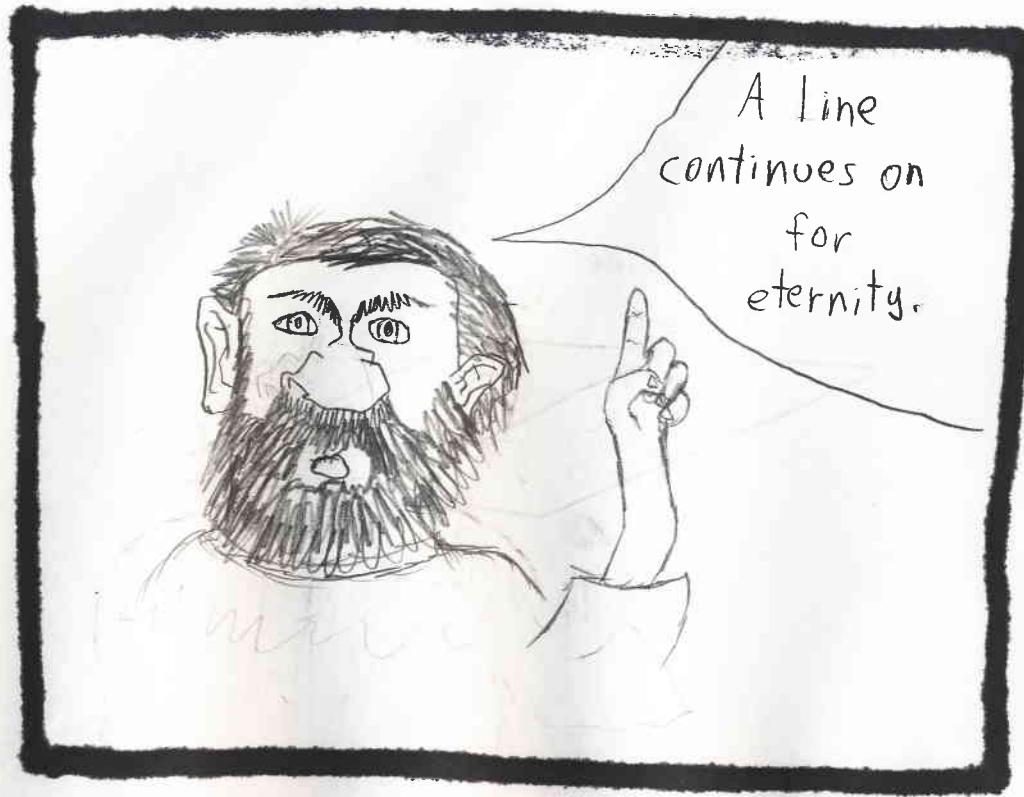
Segh was a boy always seeking a great adventure.



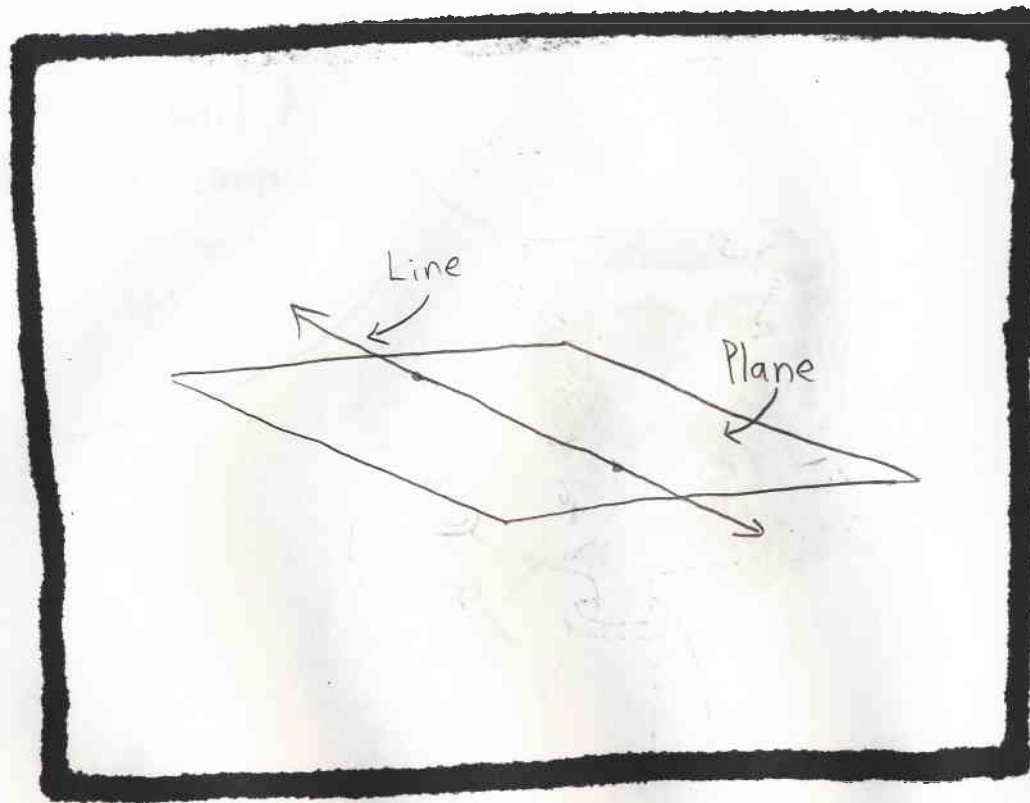
In Segh's town, located on the edge of the Sahara Dessert, there lived a very wise man that went by the name of Sir Khull.



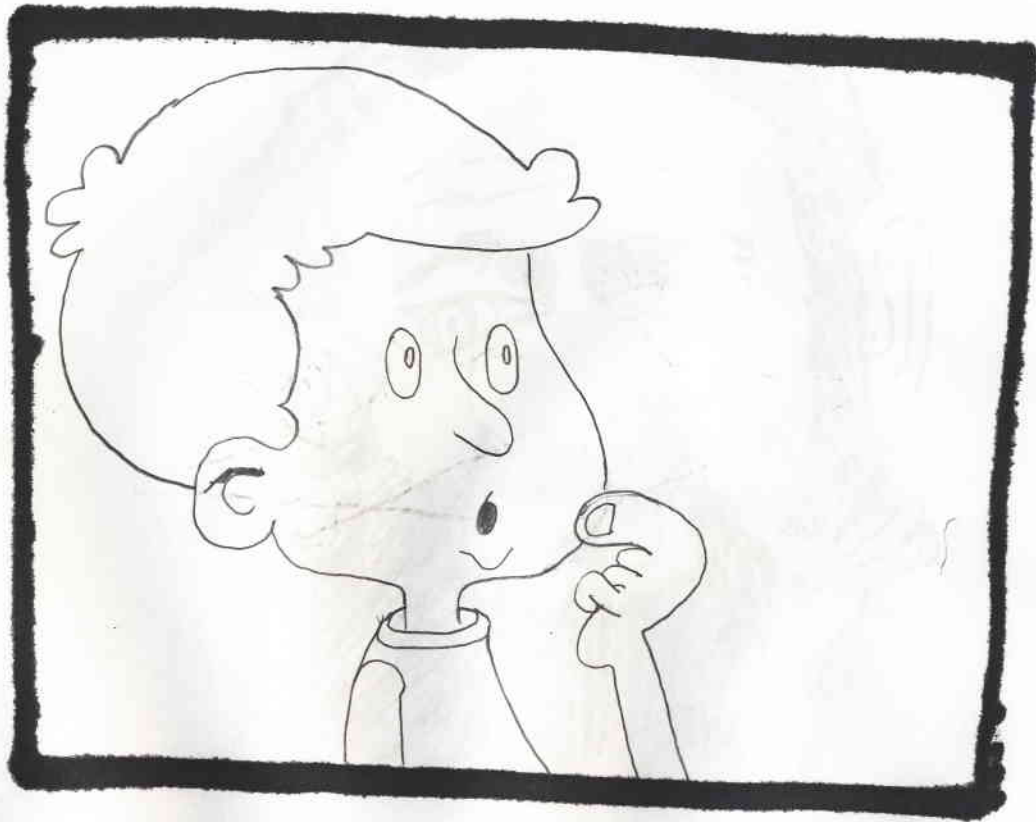
Sir Khull had much knowledge of mathematics and geometry, and he enjoyed sharing his knowledge with the townspeople.



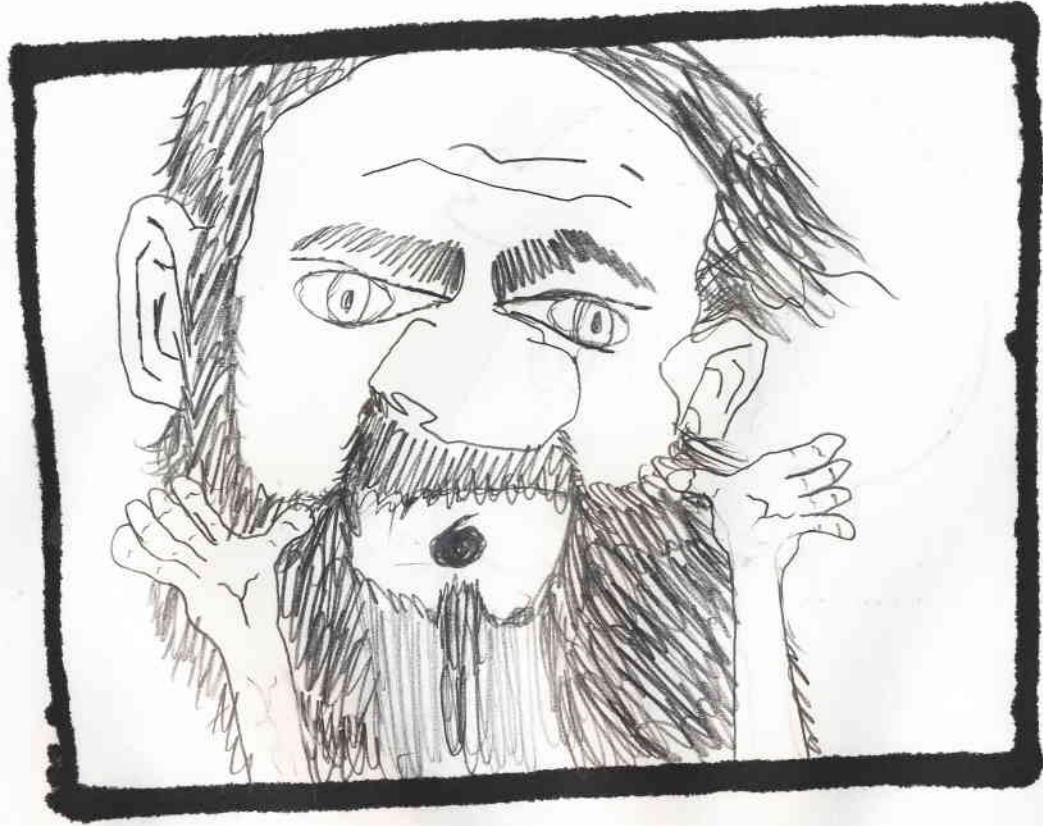
One day, Sir Khull was sharing with the town what a line was.



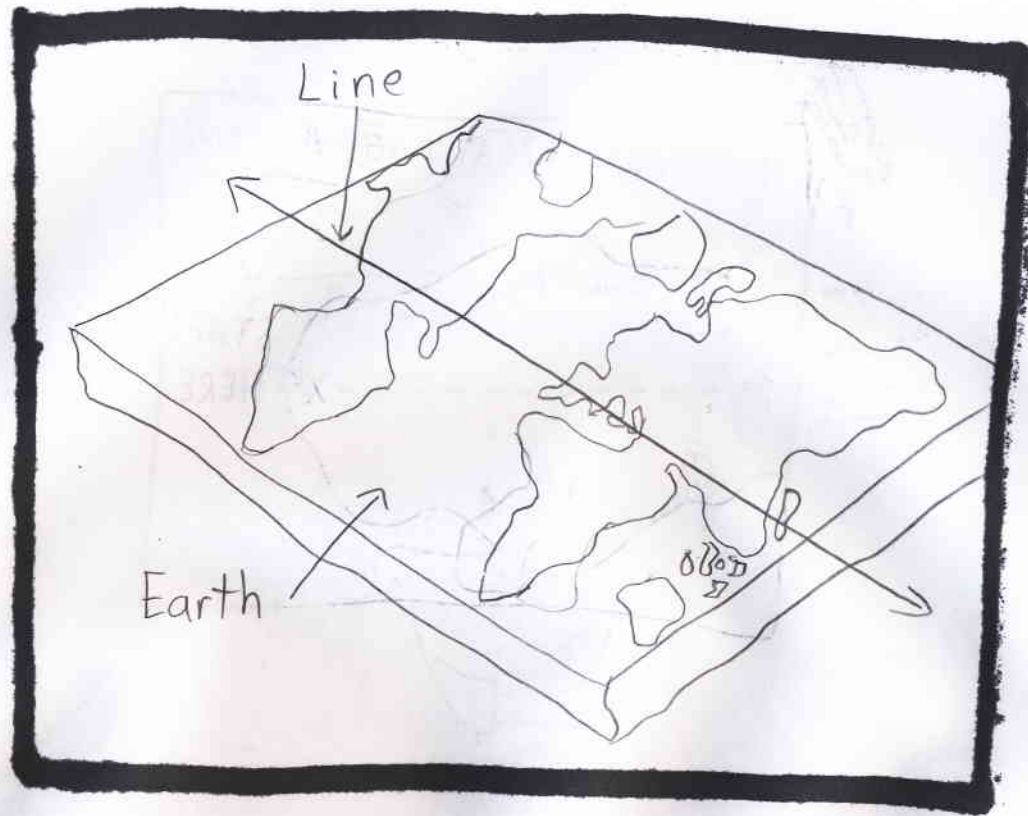
"A line," explained Sir Khull, "continues on for eternity. Such a line must be drawn on a plane, or a perfectly flat surface."



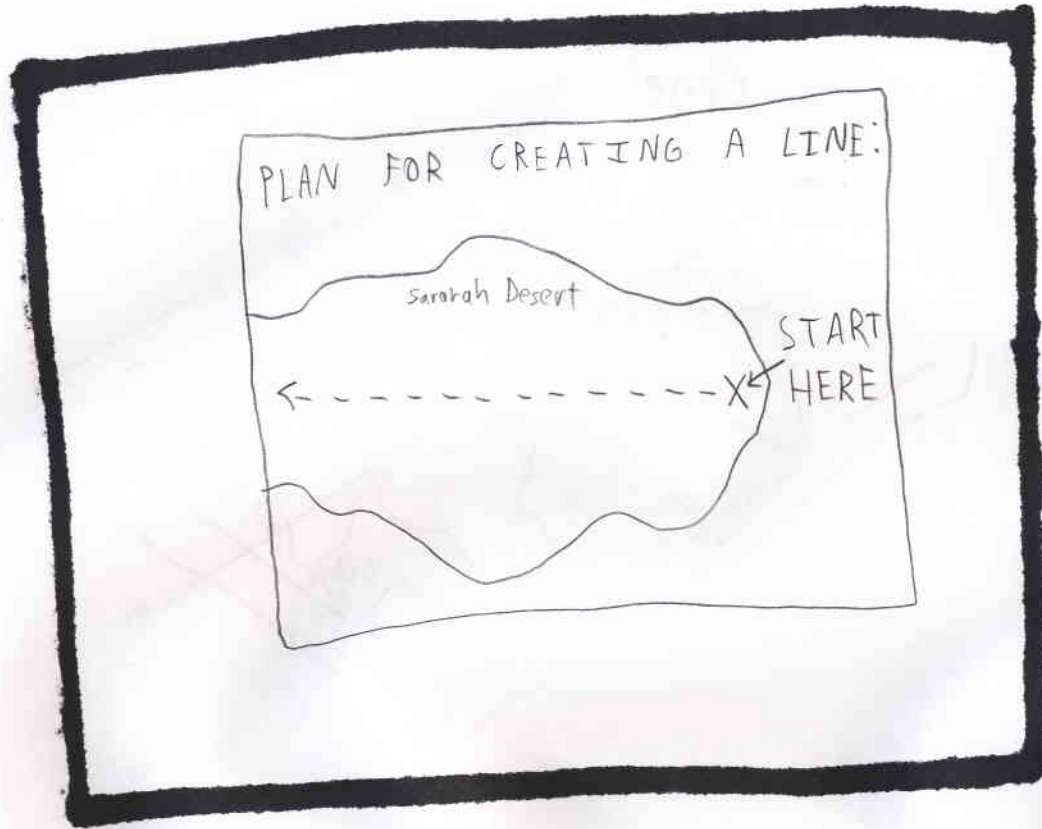
Segh asked, "Has anyone truly ever drawn a line
that extends forever?"



Sir Khull replied, "Many have tried, but none have been successful."



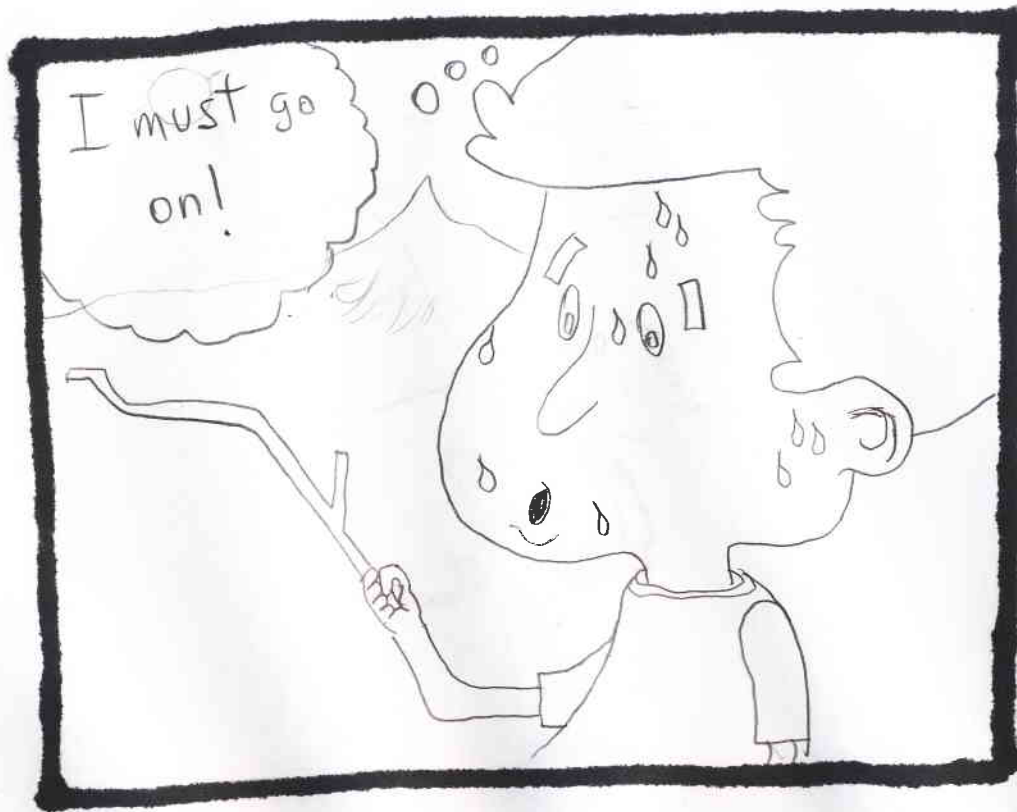
Segh, being as adventurous as he was, decided he would set out on a journey to extend a line for eternity. Since the earth was perfectly flat and was believed to extend forever at this time, it provided him with a plane to draw a line on.



His plan was to venture out into the desert, dragging a stick behind him along the way, creating a line in the sand.

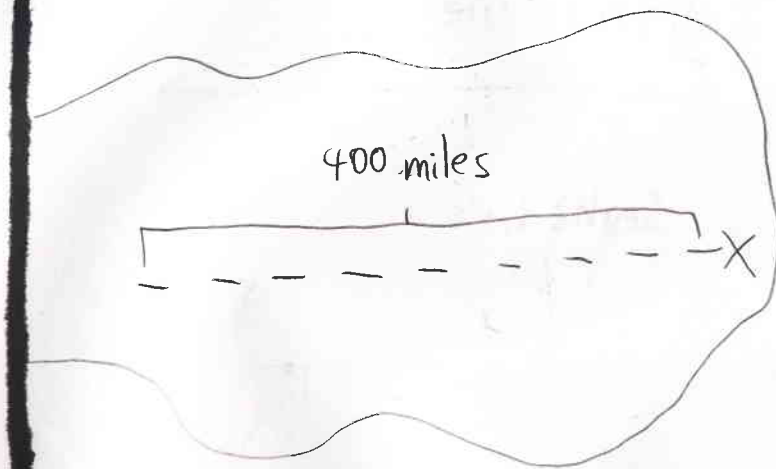


The next day, Segh's journey began. He ventured out into the desert with nothing more than a stick and the clothes on his back.

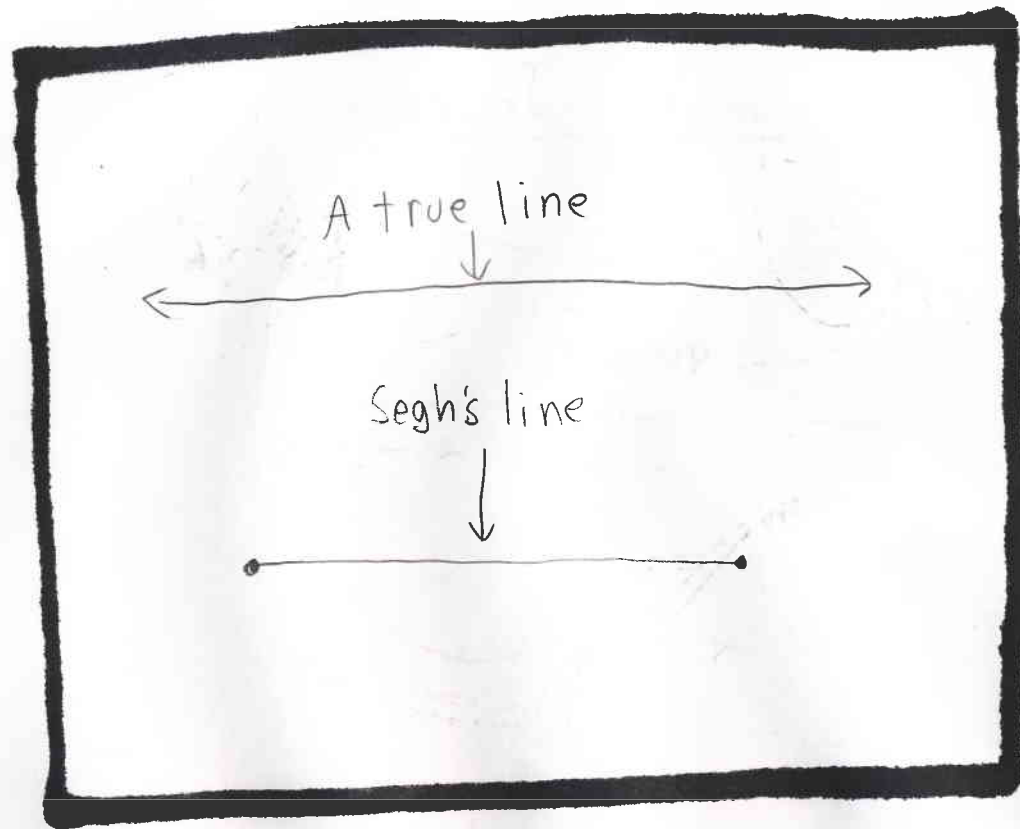


As the day grew long, Segh grew tired. "I cannot give up. I must go on," said Segh as he continued his journey.

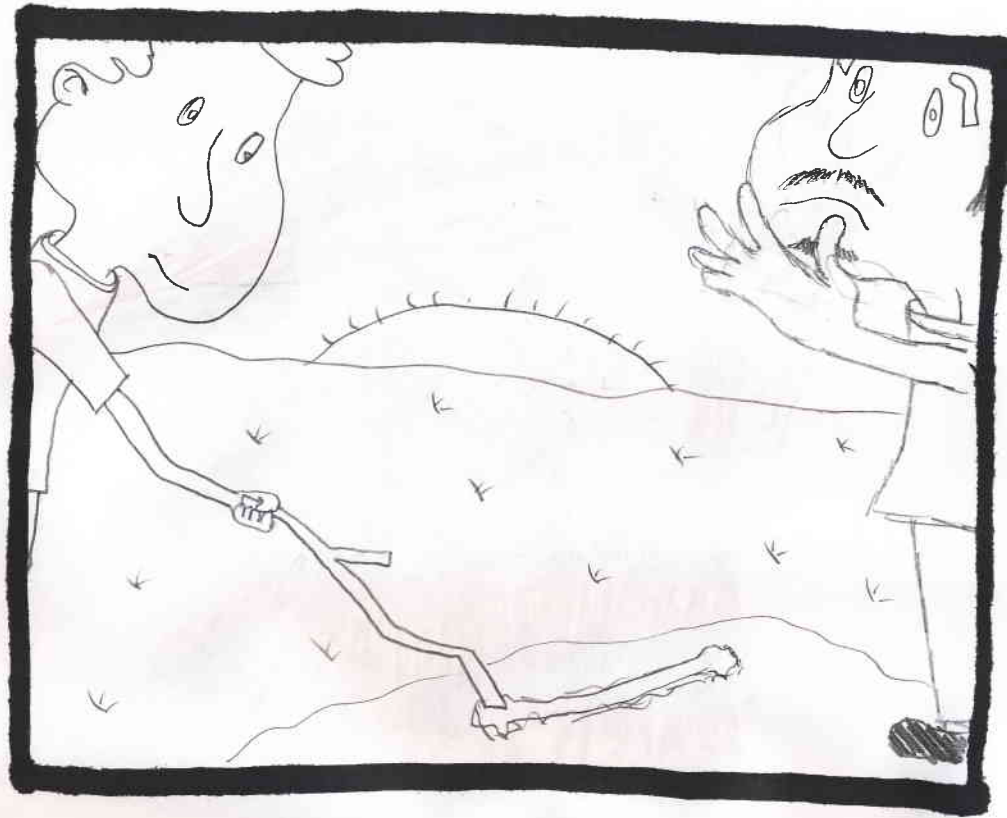
Segh's Journey



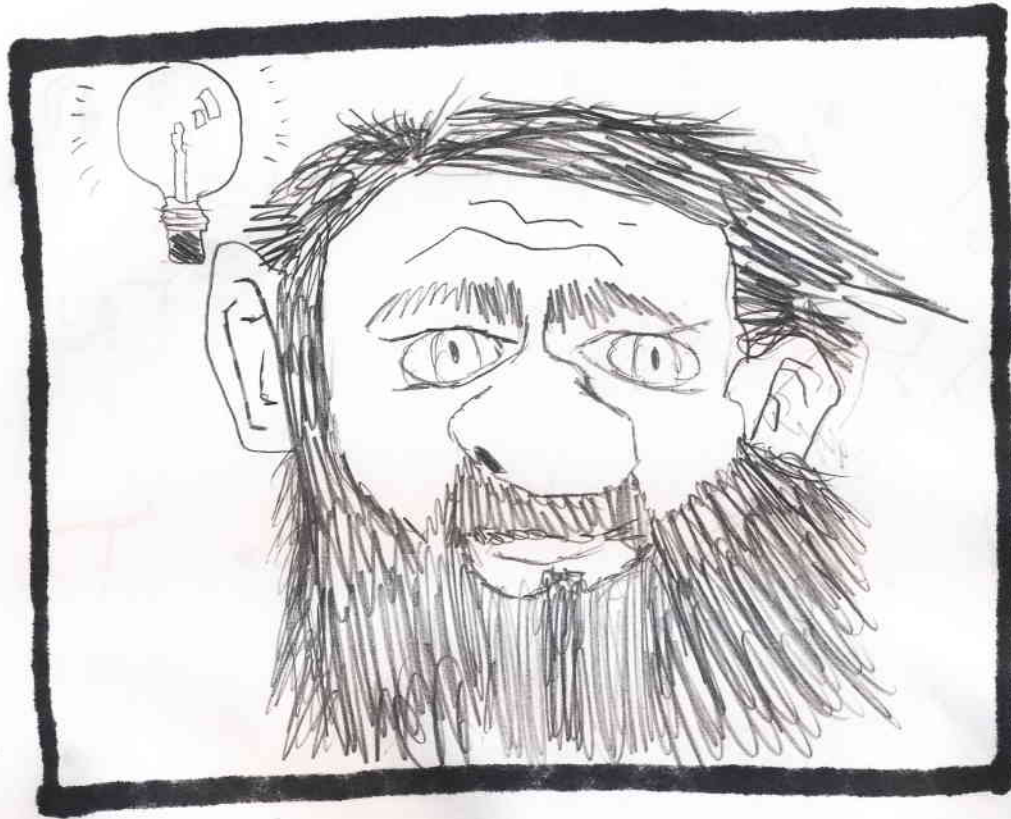
Several days later, Segh had drawn an extremely long portion of a line. However, it was not truly a line, because he had not extended it forever.



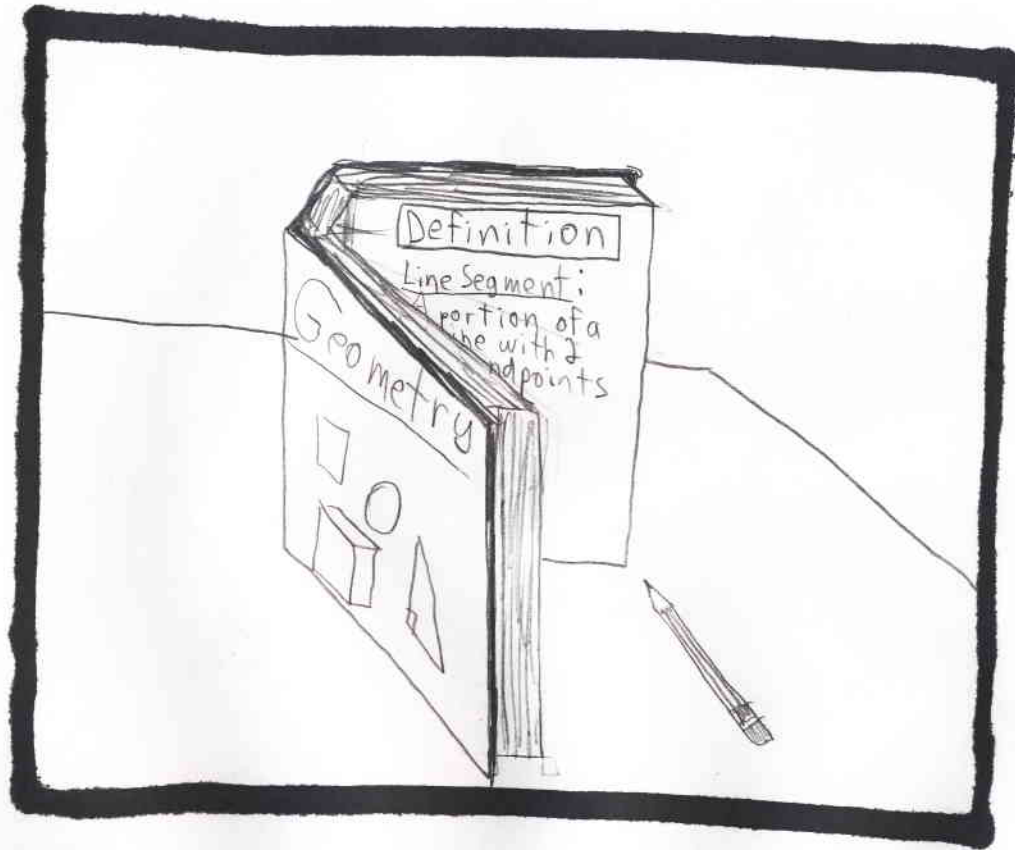
"I can take no more of this heat," proclaimed Segh. "This portion of the line I have already drawn doesn't extend forever, but it is still similar to a line."



Segh decided to return home and tell the citizens of the town that he had failed in creating a true line, and that he had, however, discovered something new. "I have come to the conclusion that it may be impossible to truly extend a line for eternity. Although, it is possible to draw a portion of a line." He then drew this so called portion of a line in the dirt to show the people.



Sir Khull was very impressed by Segh's findings, and decided that this new concept should be named after Segh.



A portion of a line was from then on known as a "seghmhint." Over the years the spelling has changed, and it is now called a "segment."