

904 N. Roosevelt

309-828-4315

February 2012



DISTRICT 87

BENT ELEMENTARY SCHOOL

# SUPERSTAR GAZETTE

## Message From The Principal

Hello Superstar Parents! With February here I am beginning to think about spring. Of course with this mild winter, it's almost been spring-like anyway. On those warmer days, we have a lot of kids wanting to take off their coats during recess. Unless it is a very warm day, we won't allow this. It may be helpful if you break out the jackets! Parent –Teacher conferences are coming up soon! Please check with your teacher to make an appointment. Many of the teachers are making themselves available after school during that week to accommodate your work schedules.

Being cooped up for winter with kids all wearing coats increases the likelihood of spreading head lice. While not a medical threat, head lice is pretty annoying. We are taking steps at Bent to try to keep kids from sharing hats and such to help prevent any spreading. We don't do mass head checks like in the old days when I went to school, but if I find a case, I will notify the parent.

Mr. G



### ISAT TESTING

For 3, 4, and 5<sup>th</sup> grades

**Weeks of March 5 and  
March 12**

*Please do NOT schedule any appointments, trips,  
etc. during these weeks.*

If your child is absent, it counts against our school's  
overall scores!

**MARK YOUR CALENDARS!**

# "All Stars Shine"

**AUTHORS and ARTISTS**

**Annual Book and Art Display**



**MAY 1<sup>ST</sup>**

**6-7**

**Come celebrate creativity!**

**All students will have work on display**

## Bent Elementary Physical Education

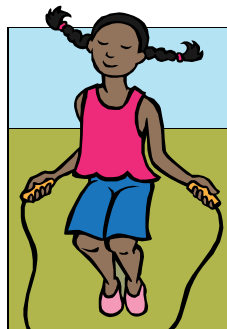
Don't get ***Bent*** Out of Shape!!

[www.district87.org/staff/christiane/](http://www.district87.org/staff/christiane/)

1. Jump Rope for Heart information has been passed out to all second through fifth graders at Bent. Our event this year will be held during regular PE times as usual the week of February 27<sup>th</sup> through March 2, 2012. Any money collected may be turned in to me at any time but is due March 3<sup>rd</sup>.
2. If you have any question, please let me know or go to my website above for further on-line donations information.

2. I would like to welcome Mr. Eric Thoman to Bent as a Student Teacher from ISU. After assisting in our dance unit, he will be working with all 1<sup>st</sup> through 5<sup>th</sup> grades in his basketball unit.

After that, he will be also be assisting in our ropes unit and then will head to Bloomington



High school to finish out his Student Teaching tenure in District 87. Please welcome him next time you see him and say hello.

3. **Next Issue:** Information regarding Field Day volunteer times on Tuesday May 15<sup>th</sup>, 2012 will be sent out as well order forms for Field Day T-shirts.

4. Can you Cupid Shuffle? 😊

Eric Christian

Eric Thoman

(309) 828-4315

---

## **PBIS Winners**

Congratulations to our prize winners for the month of February, Chase in Mr. Busan's class and Yuridiana in Mrs. Delgado's class!!

---

## **PTO Highlights—Amanda Hogenson, President**

Join us the 1<sup>st</sup> Tuesday of every month @ 7:00 for our PTO meetings.

Send in Box Tops! Mr. Bussan's classroom won for the month of November! That is 3 months in a row for Mr. Bussan's class! Way to go 3<sup>rd</sup> graders! Please continue to send them in!

We are going to start collecting Labels for Education. This program is very similar to Box Tops. The labels are on certain food products and you just need to take the "label" off and send it in. More information on this program will be coming home soon.

Congratulations to Bradley Whitfield who won the drawing for the hockey tickets for selling Coffee Hound coffee! Thank you to everyone who was able to sell!

Recess Readers will be starting this February. The pizza party will be held Thursday, March 1<sup>st</sup> over the students lunch hour.

---

## Notes from the Cafeteria



February is Heart Month and Live Healthy

Join us for a healthy beginning to your day, by having a good breakfast!!

Also, Mr. Christian is promoting "Live Healthy"

---